

S F E R R A

H O S P I T A L I T Y

*Timeless Luxury. Unparalleled Quality.*



ORLI LA JOLLA  
LA JOLLA, CA

## Made for an Unforgettable Stay

With legendary linens and limitless capabilities, SFERRA is the partner of choice for the most prestigious properties around the globe.

The application must be accompanied by duplicate unmounted photographs of the applicant, not larger than three inches in size, one of which is to be affixed to the passport by the Department.

This blank must be completely filled out. The legal fee of one dollar, in currency or postal money order, and the applicant's certificate of naturalization must accompany the application.

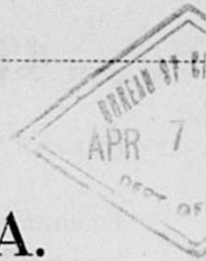
The rules should be carefully read before mailing the application to the Department of State, Bureau of Citizenship, Washington, D. C.

[EDITION OF 1914.]

[FORM FOR NATURALIZED CITIZEN.]

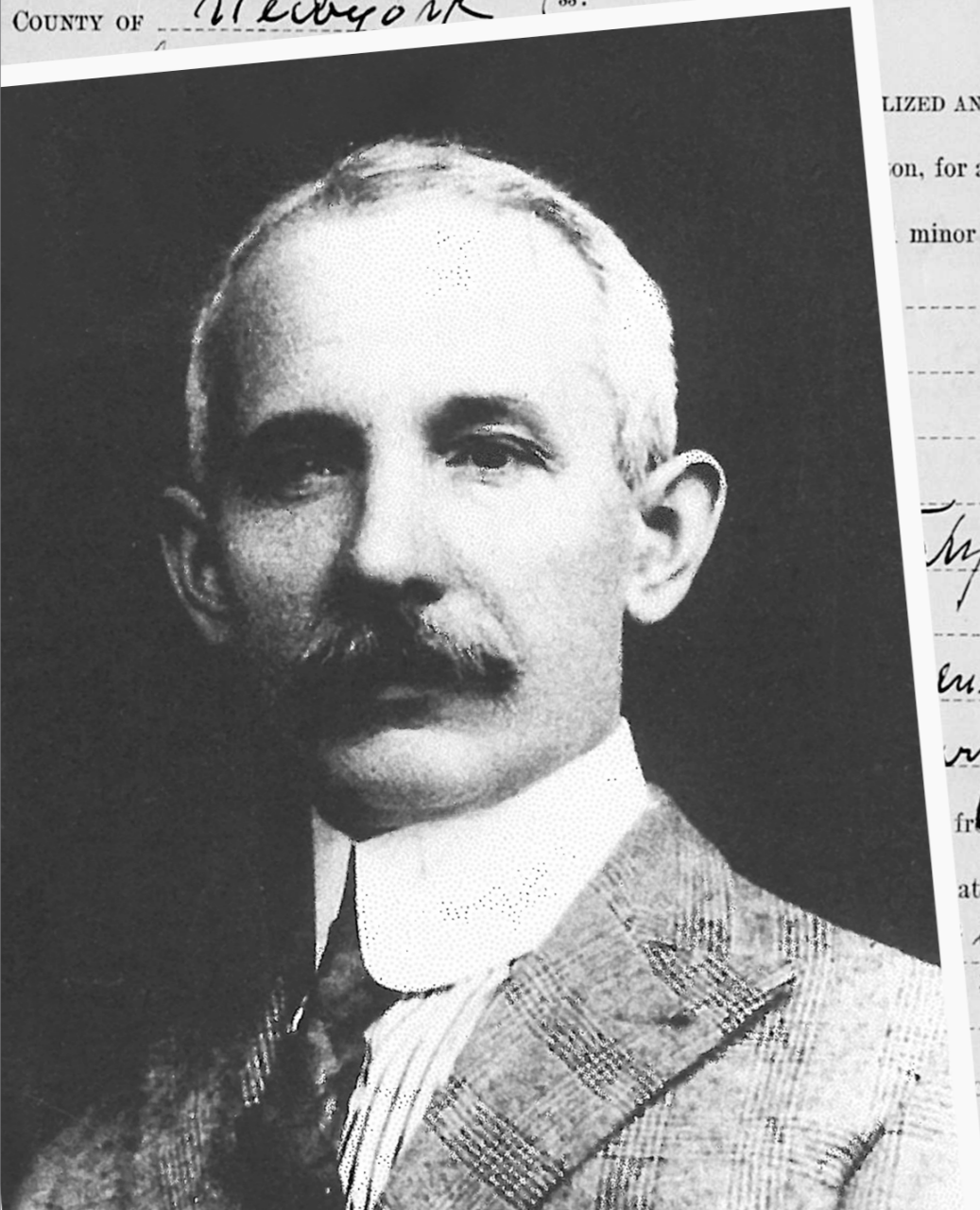
No. ....

Issued .....



## UNITED STATES OF AMERICA.

STATE OF New York  
COUNTY OF New York } ss:



NATURALIZED AND LOYAL CITIZEN OF

on, for a passport for myself

minor children, as follows:

....., 1  
....., 1  
....., 1  
....., 1  
....., 1

My  
....., 1886

entente  
....., 1886

my 18 ..... 1886

from 1886 to 19

naturalized as a citizen of

York ..... 1886

....., 1886

PERSON described

residence being

# A Century of Quality

More than 130 years ago, SFERRA spun its first threads of Italian lace. Founder Gennaro Sferra carried the expertise, the intricacy, and the luxury of the fabric to his new start in America—and established our brand as the paragon of quality.

Since 1891, we've approached every new collection with Gennaro's distinctive duality of impeccable Italian craftsmanship meets visionary American innovation. Year after year, decade after decade, we design each piece with our signature New York originality, then carefully craft it with time-honored traditions using pure, raw materials.

You can feel the SFERRA difference in duvets woven of the finest Egyptian cotton, towels wrapped in rich terry cloth, and table linens finished with delicate, refined hemstitching. We weave beauty and comfort into every piece, filling every room with touchable, livable luxury.



THE SFERRA DIFFERENCE

## Careful Craftsmanship at Every Step

We pride ourselves on the attention we give to every thread, at every phase of its journey. From the beauty of our raw materials to the precise hand-crafting of our pieces by artisans that have stayed with our brand for more than 30 years, our quality never wavers because our care never falters.



THE BEEKMAN | *NEW YORK, NY*

In this historic building, guests enjoy bespoke vintage furniture, exceptional service, and specially designed SFERRA linens and robes.

ROSEWOOD MIRAMAR BEACH  
MONTECITO, CA



## A Cut Above the Rest

With our complete offering of sumptuous textiles and our extraordinary customization capabilities, we're a versatile partner for any hospitality need. For decades, we've been proud to dress every bed, bath, and table of the world's most exclusive hotels, airlines, restaurants, yachts, and residences—even custom table linens for The White House.



## The Perfect White Bed

There's not just a feel to it, but a sound. It's a gentle exhale, a smooth settling. A SFERRA bed welcomes you in and invites you to stay.

# Staying Power

Our sumptuous bedding tempts guests to stay forever—but the real magic lies in its utility and durability. With the most premium raw materials and a range of superior thread counts, SFERRA sheeting is lasting luxury.



**MURANO 300 TC PIMA  
COTTON SATEEN**



**PATIMA 300 TC  
COTTON PERCALE**



**LUSTRO 400 TC  
COTTON SATEEN**



# Soft Landing

Throws and bed ends add richness to bedding layers, along with the touches of home comfort. Our color customization options can add a subtle hint to the hotel's own interior design aesthetic.



**AURORA BRUSHED  
COTTON THROW**



**BRISTOL PIMA  
COTTON-ALPACA THROW**



**CELINE BRUSHED  
COTTON THROW**

# Classic Indulgences

With our signature splendid textures, SFERRA bath and table linens exemplify the joys of travel. Exceptional woven constructions, fine details, and European tailoring add a touch of luxury to every moment.



PLUSH ROBES



EUROPEAN HEMSTITCHED LINEN



TERRY TOWELS

# 101 Bold Colors

With beautiful, hand-thread-drawn hemstitching and every shade you can dream of, our Festival collection dresses any table in elegance.



FESTIVAL COLLECTION



HOTEL MAGDALENA | *Austin, TX*

SFERRA bed linens and towels wrap guests in ease and comfort during vibrant stays in the heart of Austin's popular South Congress neighborhood.



## Dreams in the Making

The short answer to our customization capabilities is “yes.” We create unique products from scratch, incorporating your chosen designs, colors, and embroidery—and even custom fabric blends, sizes, and constructions.

HOTEL SAINT VINCENT  
NEW ORLEANS, LA



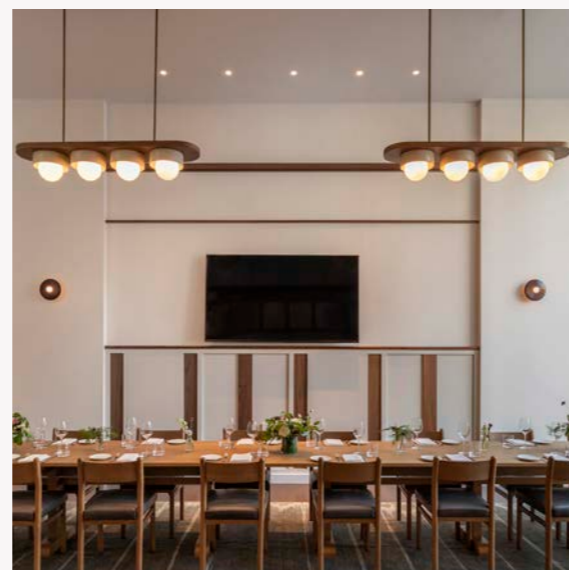
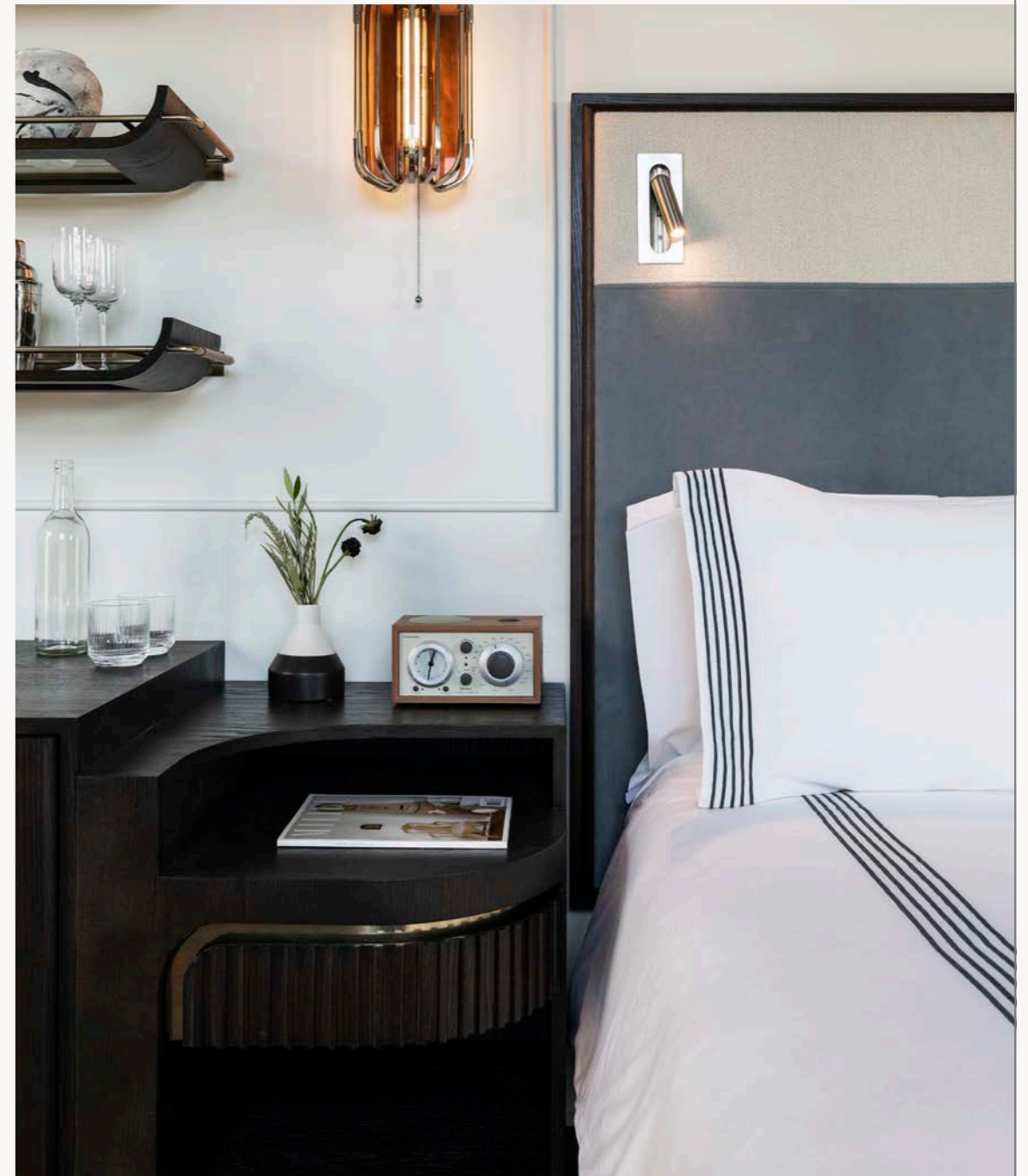
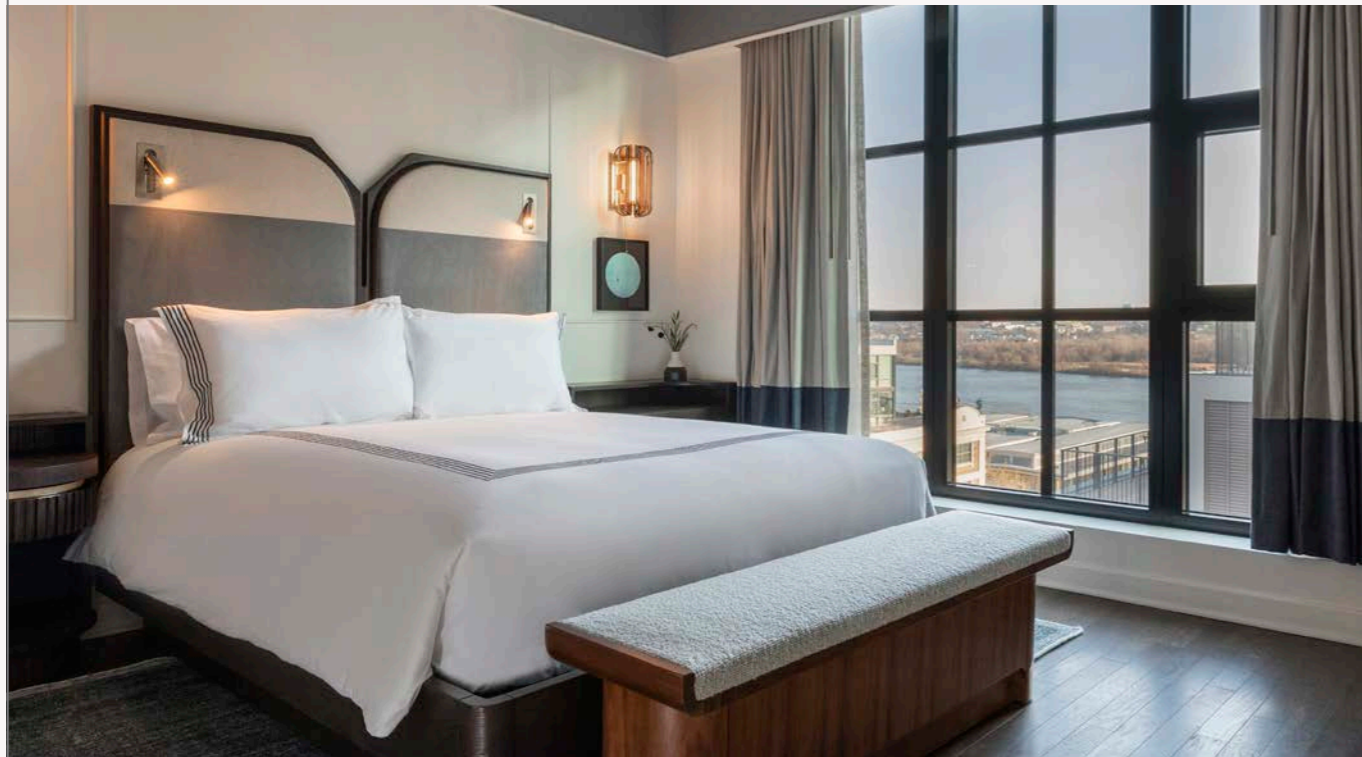
## Five-Star Rest

SFERRA can be found in the world's finest guestrooms, hotels, private clubs, spas, and luxury resorts.

# THOMPSON HOTEL

*Washington, D.C.*

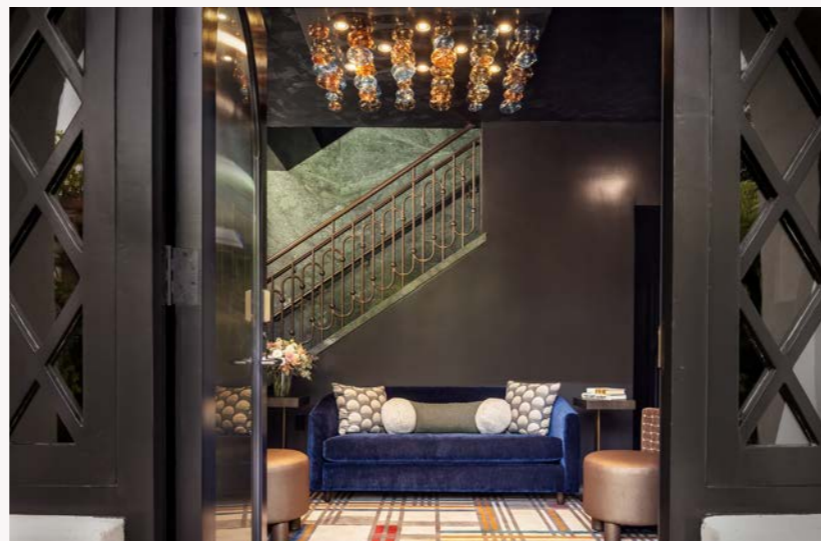
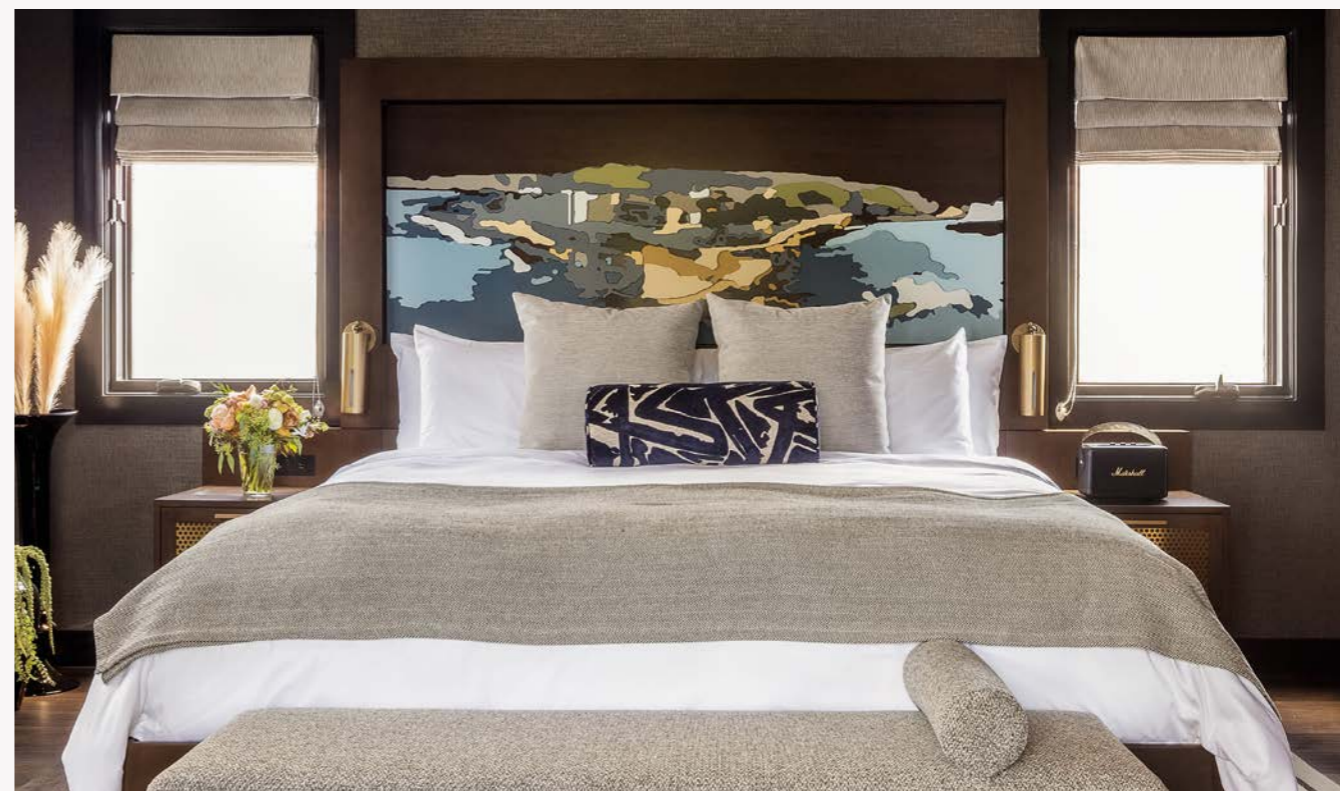
First-class SFERRA linens can be found in each of the Thompson's 225 sleek guestrooms and suites in the bustling Navy Yard neighborhood.



# ORLI LA JOLLA

*La Jolla, California*

Dedicated to discerning travelers, the Orli experience is curated with SFERRA bedding, terry towels, and even custom-embroidered slippers.

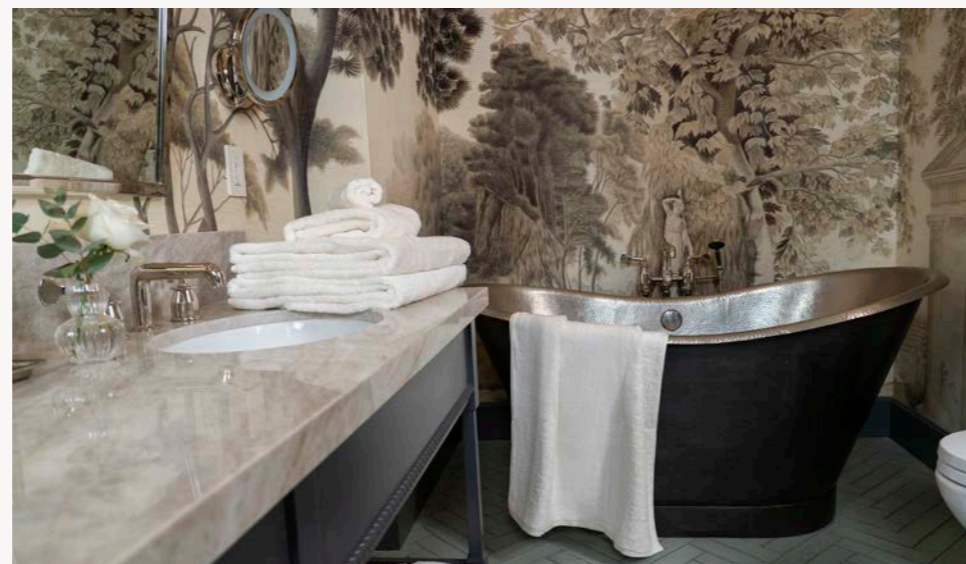
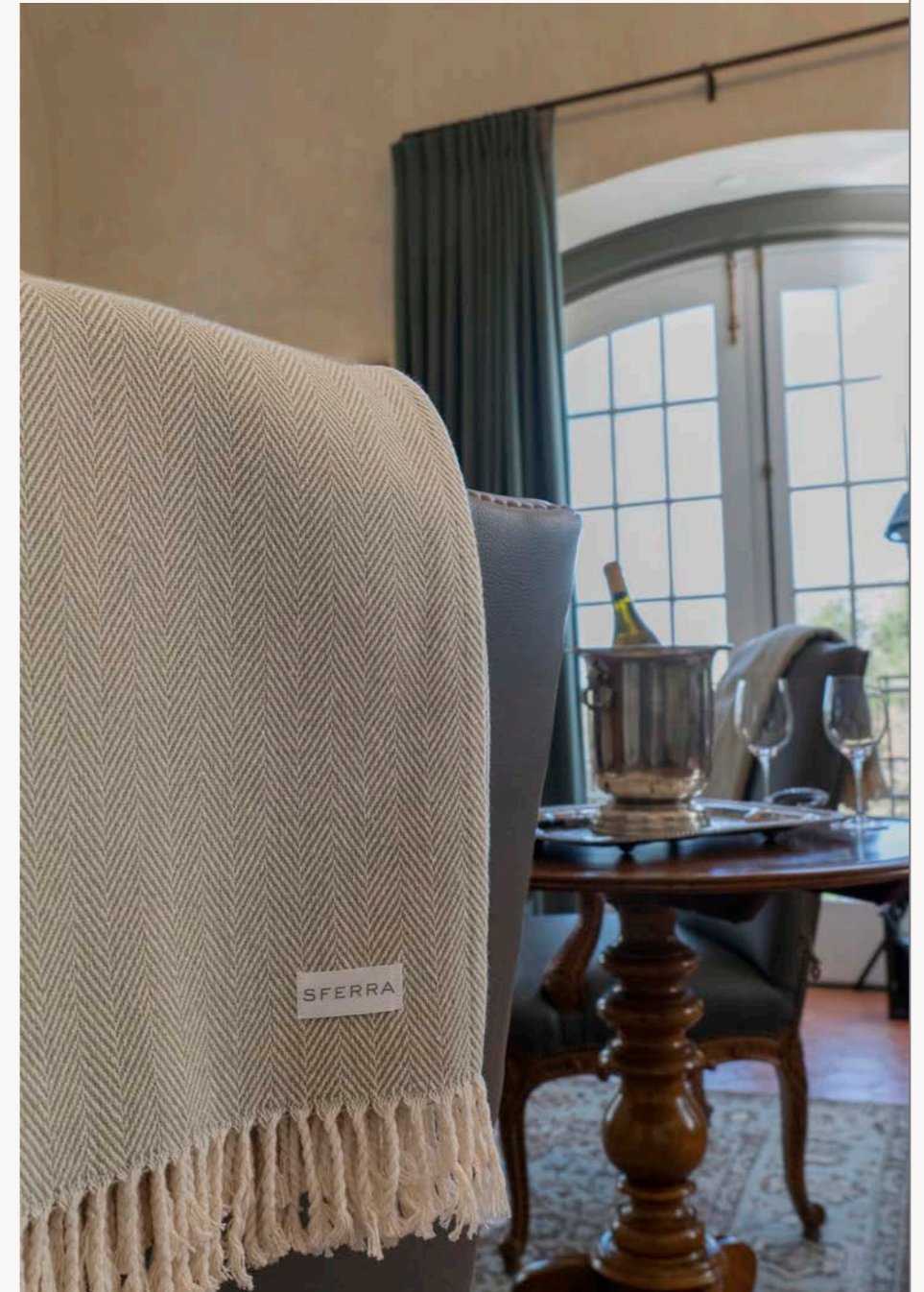




# JORDAN VINEYARD & WINERY

*Healdsburg, California*

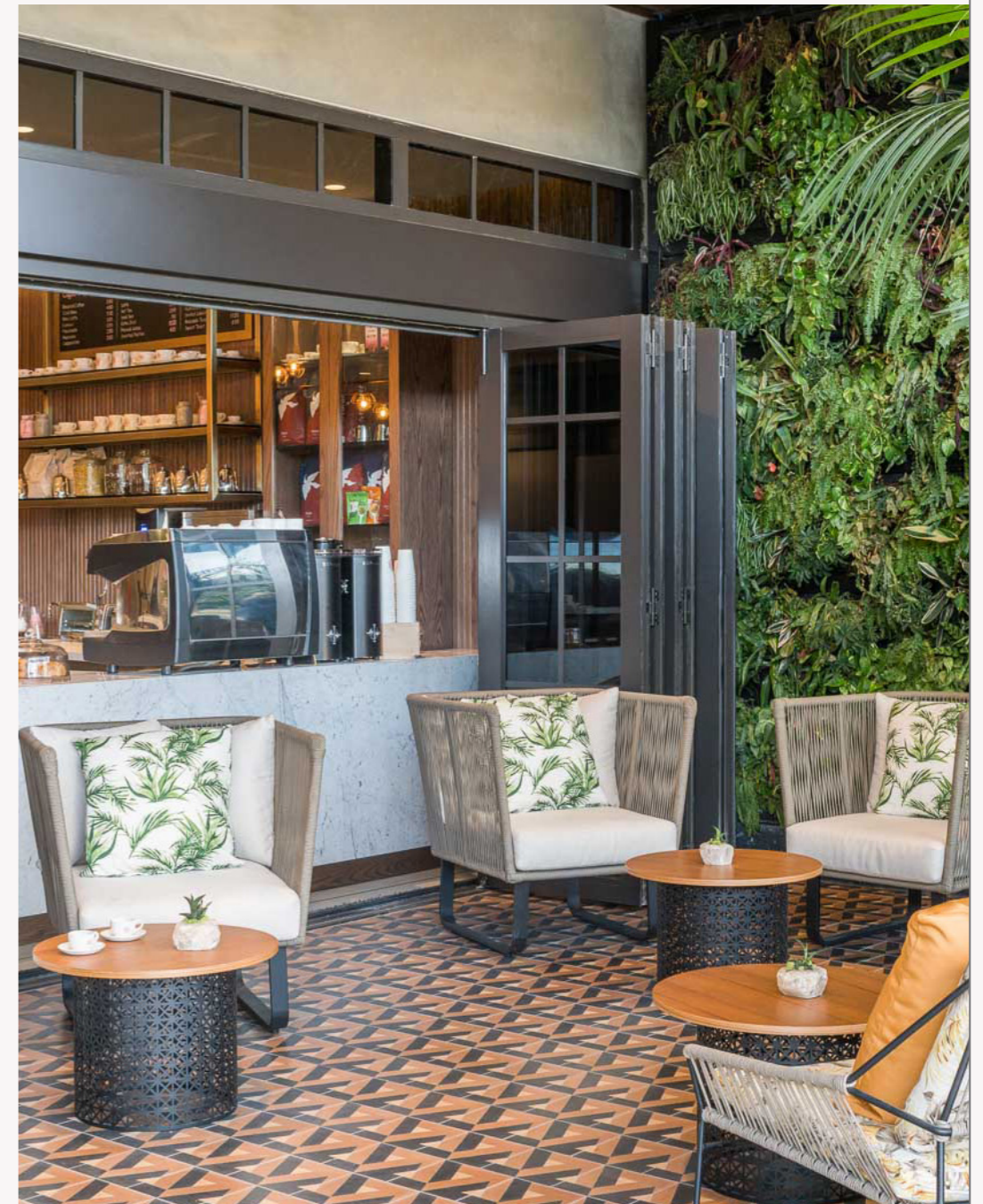
SFERRA was the clear choice in linens for the Jordan Estate following the remodel of the three suites in their iconic French chateau.



# THE DALMAR

*Fort Lauderdale, Florida*

Every vibrant stay in South Florida deserves impossible-to-resist SFERRA linens and a curated collection of premium bath amenities.



# The Designer Space

Our textile expertise, integration, and manufacturing capabilities make us the perfect partner for collaborations with interior design and architectural firms in residential and commercial hospitality.





## Make Every Day a Vacation

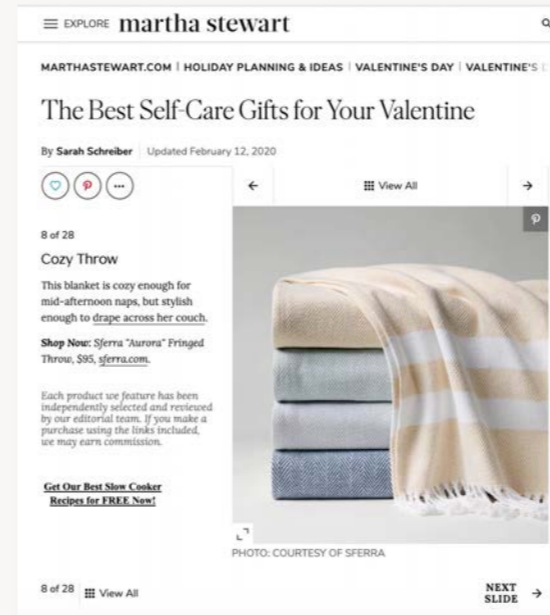
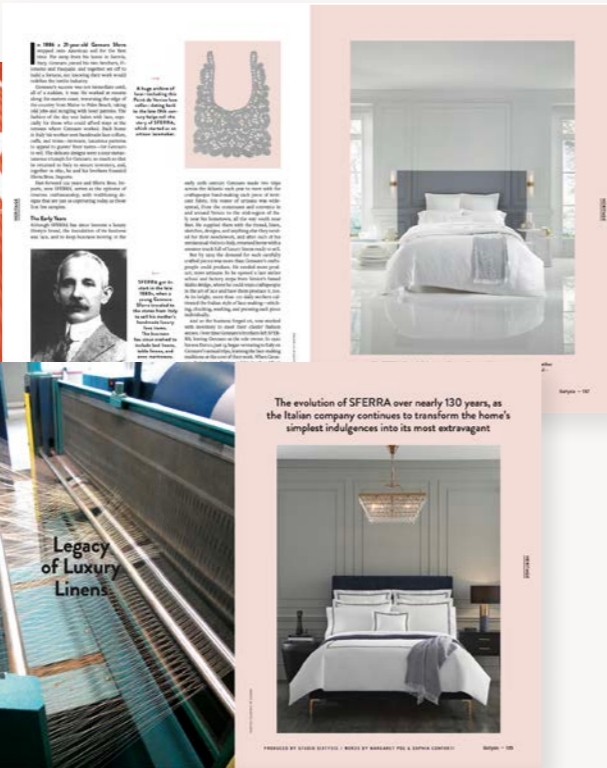
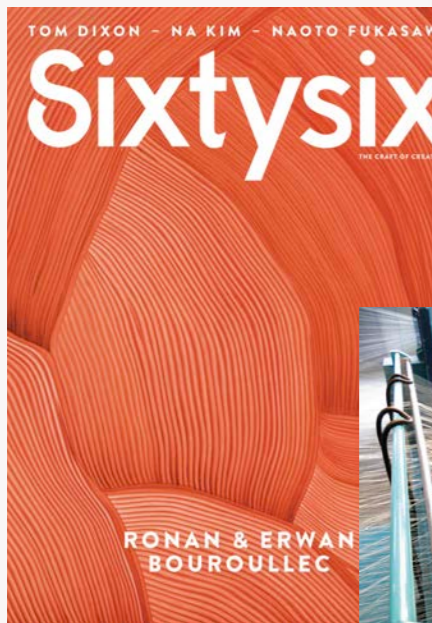
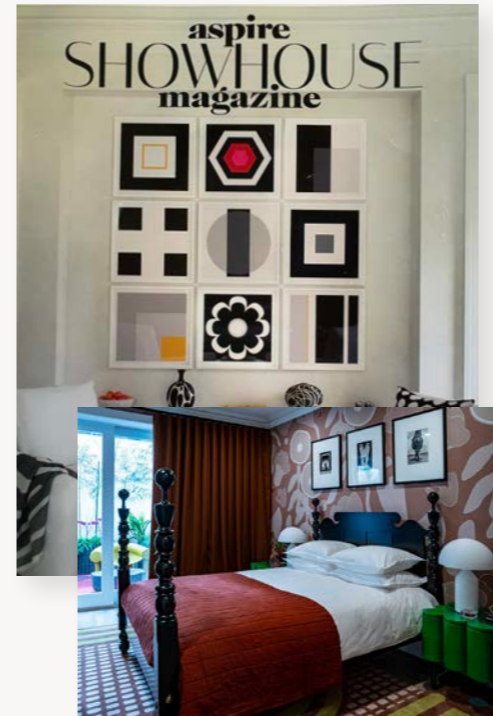
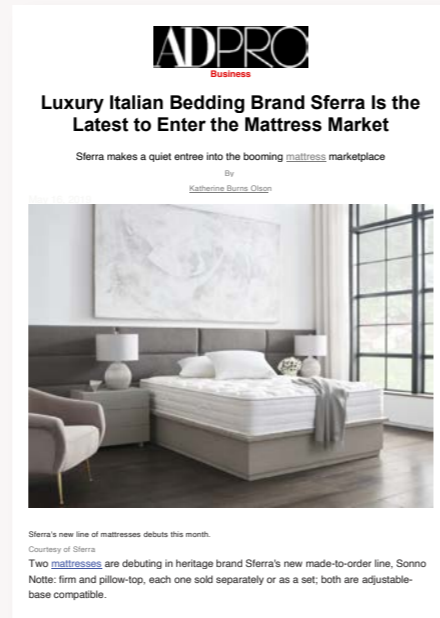
Our comfort and quality can travel home with your guests—opportunities for incremental sales are possible with SFERRA sheets and towels stocked in your hotel boutique.



THE LOREN | *BERMUDA*  
Crisp SFERRA linens and deluxe towels are the ultimate complement to The Loren's calming, chic elegance and panoramic ocean views.

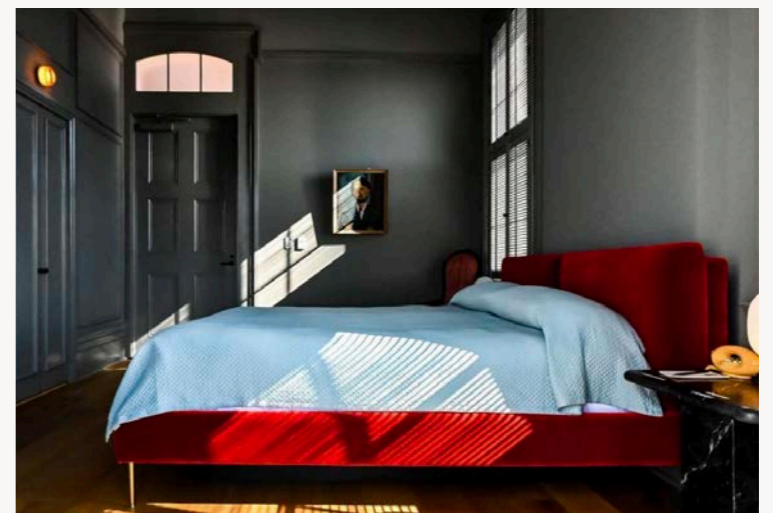
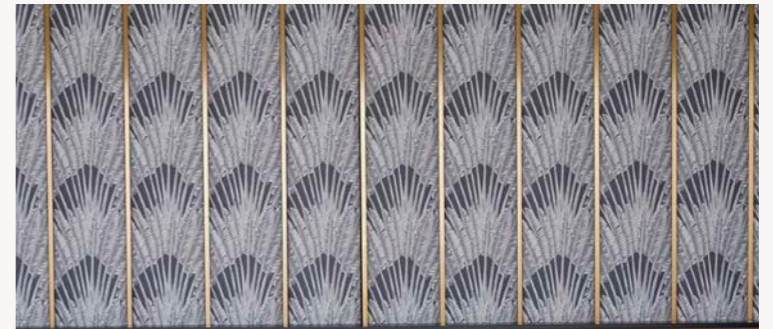
# Common Threads

Our reputation is clear: SFERRA is synonymous with quality.



# Dream Partners, Dream Getaways

As seen on Instagram.





## Where We Are

The SFERRA reach extends across the globe, from Harrod's in London to our first retail townhouse in the heart of New York City's iconic Flatiron District.



# Stay With SFERRA

Experience the difference at exclusive properties worldwide.

AKA Hotels  
Albert Hotel  
Allred's Hermosa Inn  
Amangiri Resort & Spa  
Anchor Inn  
The Arnold House  
Applewood Manor  
Austin Motel  
Austin Proper  
The Baron Club  
Bees Nees Getaways  
Belmond Cadogan Estate  
The Betsy  
Blackberry Farm  
The Blake Hotel  
The Brattleboro  
Bunkhouse  
The Carlyle, A Rosewood Hotel  
The Cat Noir  
Cayo Espanto Island Resort  
Central Park Tower  
The Chanler at Cliff Walk  
Chatham Bars Inn  
The Charmant Hotel  
The Chattooga Club  
The Chatwal Hotel  
Chicago Athletic Association Hotel  
The Cove Eleuthera  
Crossroads Hotel  
Cyrus Hotel

The DeBruce  
Detroit Foundation Hotel  
The Dowager Inn  
East Austin Hotel  
El Cosmico  
The Elser Residences  
Flanigan's Inn  
Four Seasons Resort &  
Residences Anguilla  
Glover Park Hotel  
The Graham Georgetown  
Greydon House  
The Hermosa Inn  
Hotel Breakwater South Beach  
Hotel Charleston Santa Teresa  
Hotel Covington  
Hotel Genevieve  
Hotel Havana  
Hotel Magdalena  
Hotel Pippa  
Hotel Saint Cecilia  
Hotel Saint Vincent  
Hotel San Cristóbal  
Hotel San José  
Hotel Virrey de Mendoza  
Hotel Victor  
Hotel Vitale  
Hotel Walloon  
Hygeia House  
Indian Springs Resort & Spa

Inn at Cocoa Beach  
Inn at Shelburne Farms  
Inn at Tyler Hill  
Inn on the Beach  
The Iron Horse Hotel  
The James Madison Inn  
Jordan Vineyard & Winery  
The Joule  
Kimber Modern  
The Knickerbocker  
Lafayette Hotel  
Las Ventanas al Paraiso, a  
Rosewood Resort  
Library Hotel  
The Loren at Lady Bird Lake  
The Loren at Pink Beach  
The Lowell  
The Lumen  
Lyle DC  
The Marlin Hotel  
Metropolitan Club  
Moxy Hotel  
The Neighborhood Hotel  
Lincoln Park  
The New Sanno  
North Branch Inn  
One Lakeside  
Orli  
Hotel Paisano  
Pan Pacific Hotel Seattle

Park Hyatt New York  
The Park on Main  
The Peninsula New York  
The Quin  
The Ram's Head Inn  
The Ranch At Rock Creek  
The Renaissance Club  
ROOST  
Riggs Washington, DC  
Rosewood Hotels  
Rusty Parrot Lodge & Spa  
Sage and Madison  
Salish Lodge & Spa  
Scottsdale National Golf Club  
Shutters on the Beach  
Sixty Hotels  
South Congress Hotel  
Sugar Beach, A Viceroy Resort  
The Talbott Hotel  
The Tetherow  
Thompson Hotels  
Tourists  
Ventana Big Sur Resort & Spa  
Viceroy L'Ermitage Beverly Hills  
The Westgate Hotel  
Westglow Resort & Spa  
The Whitney  
Windsor Hotel  
WM. Muhlherin's Son



## Yours in Comfort

Contact John Schloesser, Hospitality Sales Manager, at [jschloesser@sferra.com](mailto:jschloesser@sferra.com).

S F E R R A

ITALY



1891